



Accommodation sheet

General information

Accommodation name	B&B HOTEL AREZZO
Typology	Hotel
Address	Via Einstein n. 4
City	Arezzo
Contacts	+39 0575 382287 - arezzo@hotelbb.com
Website	https://www.hotel-bb.com/it/hotel/arezzo
WCAG 2.1 compliant accessible website	YES
Online bookings	YES
Short description	<p>The B&B HOTEL Arezzo is a 3-star hotel that is 3km from the city center, a 5-minute walk from the Arezzo Fair, a 7-minute drive from the train station and a few minutes from the main points of interest in the area such as the Medici Fortress and Piazza Grande. The hotel has two meeting rooms and a large and free parking lot in front of the hotel.</p> <p>Reception hours: The reception is open from 7:00 AM to 11:00 PM and from 2:00 PM onwards you can check in. If you arrive at the hotel between 11:00 pm and 7:00 am, you will be able to use Kiosk – your automatic receptionist – which will help you carry out all the operations to check-in and access your room even at night. In order to use the service, bring your booking number with you, pay by credit card (you will be asked for your PIN code at the time of payment) and collect the receipt with the code to be entered at the hotel entrance.</p>

TESTED BY: [Handy Superabile Social Promotion Association](#) in 2024

Please note The following information refers to the date of verification shown at the bottom of each sheet. The Association is not responsible for any significant changes made by the property after the visit.

Project carried out with the contribution of the





Summary

Accommodation sheet	1
General information	1
Arrival at the property.....	3
How to reach the property.....	3
Pathway from the private/public car park to the entrance	5
Entrance to the structure.....	6
Hall - Reception	7
Rooms/apartments	8
Rooms/apartments adapted for guests with reduced mobility.....	8
Toilet facilities in the guest room for guests with reduced mobility.....	11
Bar/restaurant.....	13
Internal pathways and common services	15
Internal pathways.....	15
Communal toilets	15
Medical practices/healthcare facilities.....	17





Arrival at the property

How to reach the property

By car	from the north: reachable by car from the dedicated exit of the A1 Milan-Naples motorway, exit at the Arezzo tollbooth and take the direction of Arezzo Centro. After 7 km on the ring road, take the exit for Pratacci and from there on follow the signs; for those coming from the Adriatic or Tyrrhenian coasts, with the SGC E78 Due Mari Fano-Grosseto; for those coming from the north, with the SS 69 of Valdarno; for those coming from Grosseto, Siena or Sansepolcro (Valtiberina), with the SR 73 Senese-Aretina
By plane	The nearest airports are: Pisa (PSA), Florence (FLR) in Tuscany and Perugia (PEG). From the 3 airports it is then possible to use the connections with the national railway system or use one of the numerous car rental services.
Assistance service for people with disabilities	YES but pre-notificata to the airline, travel agency or tour operator when booking the flight or, at the latest, at least 48 hours before departure
Embarkation/disembarkation of passengers with reduced mobility	Forklifts: available for boarding and disembarking passengers on the aircraft
Tactile paths for the blind and visually impaired	YES
There is a toilet room accessible with grab handles	YES
By train	
Nearest station	Arezzo Km 3,3





<p>Assistance service for people with disabilities</p>	<p>YES. RFI Blue Room of reference: Florence</p> <p>The services to be carried out can be requested in person at the RFI Blue Rooms or by telephone up to 12 hours before the departure/arrival time of the train in the opening time slot of the Blue Rooms.</p>
<p>Eventual notes</p>	<p>The Arezzo station is equipped with a total of *7 tracks* to serve passenger trains. Below are the facilities that guarantee accessibility. [Please take into account that any temporary out-of-service of the lifts as well as the inhomogeneity between the height of the track platform and the train body floor may lead to changes in accessibility]</p> <p>The lifts are open from 06:00 to 23:00</p> <p>Barrier-free route updated on 20/09/2024 (flat and/or with a ramp) up to the track:</p> <p>1 1 NORTH</p> <p>Barrier-free path with lift to the platform:</p> <p>1 1 NORTH 2 3 4 5</p> <p>Touch path from the station entrance to the platform:</p> <p>1 1 NORTH 2 3 4 5</p>





	<p>Raised platform for getting on/off trains arriving/departing at the platform:</p> <p>1 1 NORTH 2 3 4 5</p> <p>From Arezzo railway station, take the LF6 bus towards Pratantico La Chiesa or the LF4 bus towards Sc Montione 208 and get off at V. Fiorentina 476 - Caselle. From the station it is also possible to take the LF9 bus towards Monte Sopra Rondine and get off at the Via degli Upertini Opp 60 stop.</p>
--	--

Pathway from the private/public car park to the entrance

Presence of private parking	YES
Presence of parking space reserved for people with disabilities	YES n.4
Type of flooring of the private parking lot	asphalt
Public parking nearby	YES
Type of flooring in the public car park	asphalt
Presence of parking space reserved for people with disabilities in the public parking lot	NO
Describe the route from the car park to the entrance and any critical issues	via ramp length 4.20 m, width 1.60 m slope 2.4%
Distance from parking to entrance	15 m





Entrance to the structure

There is an accessible entrance	YES main entrance
How to access the structure	<input checked="" type="checkbox"/> flat
Type of entrance door	Automatic
Useful width of door/entrance gate	Above 90 cm



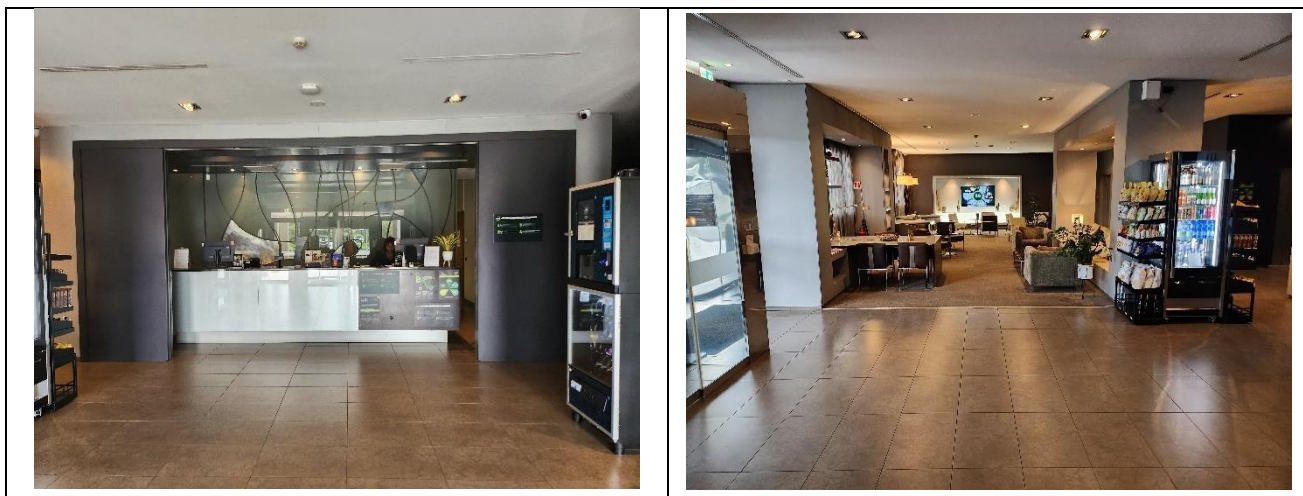


There are indicators and tactile maps	NO
	

Hall - Reception

How to reach it from the entrance	flat
Reception desk height	bench over 100 cm
Presence of multilingual staff	YES
Type of information material	<input type="checkbox"/> YES with maps/tactile signals <input checked="" type="checkbox"/> YES with brochure
Initial assistance is provided for visitors with disabilities	NO
The following aids are provided for visitors with disabilities	NO
The staff followed a training course on welcoming people with different disabilities	NO





Rooms/apartments

Rooms/apartments adapted for guests with reduced mobility

Number and type of rooms/apartments equipped/usable by people with reduced mobility	<input checked="" type="checkbox"/> double rooms 4
Room access	<input checked="" type="checkbox"/> By elevator: door width 80 cm, cabin width 110 cm, cabin depth 135 cm, call button height and highest keypad height achievable by wheelchair users, embossed/braille keys
Type of entrance door	with lever handle and magnetic card opening

Project carried out with the contribution of the





Usable width of entrance door	80 cm
Bed type and height	double bed 53 cm high
Free spaces on the sides of the bed	left Above 90 cm right Above 90 cm frontal 64 cm
Cabinet Type	with doors
Free space under the desk	64 cm
In-room options are available	<input type="checkbox"/> safe <input checked="" type="checkbox"/> minibar <input type="checkbox"/> Water Kettle <input type="checkbox"/> Iron
There is a terrace/balcony/garden (useful door width)	balcony/veranda with door width 80 cm
How to access	via 2 cm high step
Eventual notes	The emergency exit on the first floor, where there are equipped rooms, It is not workable for stairs



Project promoted by



Regione Toscana



Project carried out with the contribution of the



Presidenza del
Consiglio dei Ministri
Ministro per la disabilità



Toilet facilities in the guest room for guests with reduced mobility

Access to the premises	flat
Usable width of the entrance door	80 cm
Type of door	with inwardly opening door
Type of handle	knob
Toilet height	50 cm
Toilet seat with open front tooth	NO
Support handles	to the right of the toilet
Flexible shower on the side of the toilet	YES
Free space on the sides of the toilet	left Above 90 cm right 20.6 cm frontal Above 90 cm
Electric doorbell/telephone on the side of the toilet	YES
Washbasin with space underneath for wheelchair approach	Above 70 cm
Height from the ground lower edge mirror	sufficient for use by a person in a wheelchair





	
	
Accessible shower available for guests with reduced mobility	YES with 1 cm high step
Type of shower	with sliding curtain
Shower chair	plastic with armrests
Support handle	YES
Presence of shower head or sliding rails	ups and downs with the lowest point reachable by a seated person
Electric doorbell/telephone on the side of the shower	YES





Bar/restaurant

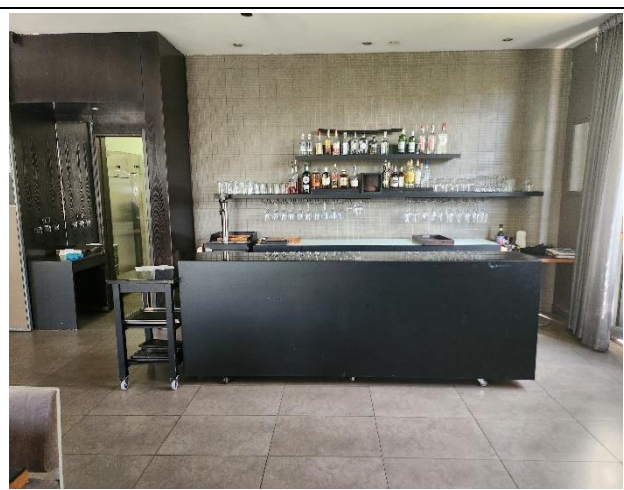
Type of venue	Restaurant
Access to the premises	<input checked="" type="checkbox"/> flat
Useful width of door/entrance gate	Above 90 cm
Bar counter height	Above 100 cm
Height of the buffet counter	Less than 100 cm
Types of tables	with central support
Space under floor tables	with central support 72.5 cm, round 70 cm and rectangular 70 cm long, 50 cm wide
Availability of high chairs for babies	YES
Multilingual menu	YES
Menu with app	Not detected
Braille menu	NO
Table service for people with disabilities	YES
Availability of foods for celiacs	<input checked="" type="checkbox"/> bread, pasta, biscuits, ice cream <input checked="" type="checkbox"/> <input checked="" type="checkbox"/> <input checked="" type="checkbox"/> <input checked="" type="checkbox"/> pre-packaged foods
There are coffee and milk dispensers	NO table service is available
A customer with reduced mobility can always reserve the same table	YES
There are toilets that can be used by a guest with reduced mobility (see "accessible toilets in the internal paths and common services)	YES
There is an area reserved for lunch for younger guests	NO
A fully equipped baby feeding service is available	NO



Project promoted by



Regione Toscana



Project carried out with the contribution of the



Presidenza del
Consiglio dei Ministri
Ministro per la disabilità



The restaurant has an outdoor veranda / dehors	NO
--	----

Internal pathways and common services

Internal pathways


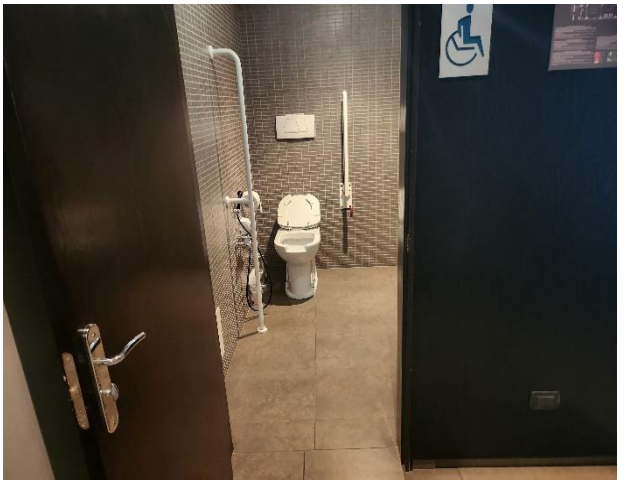

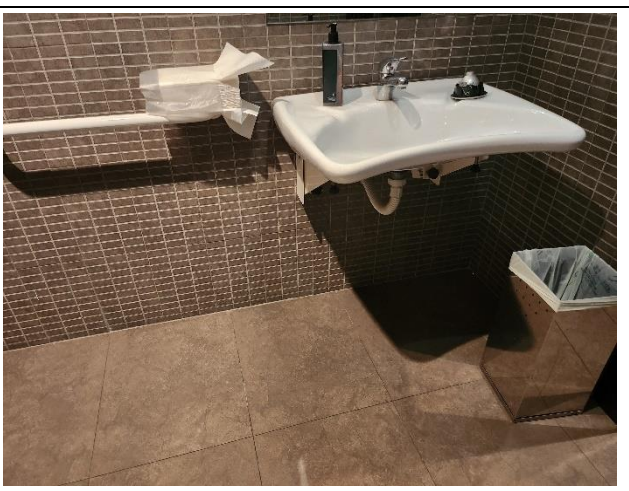
Approximate distances from the room/apartment/bungalow visited and intended for customers with disabilities up to the various main common areas	Entrance (Hall) 18 m Main restaurant 23 m
Indicate whether the paths connecting with the common areas are flat or with ramps or steps, in addition to those already described	Entrance (Hall) flat Main restaurant flat
From the visited room to the common areas there are maps and tactile signs for the blind	NO

Communal toilets

Location of the venue	near the lobby
How to access the premises	flat
Usable width of the entrance door	Above 90 cm
Type of door	with door that can be opened outwards
Type of handle	lever
Toilet height	47.6 cm
Toilet seat with open front tooth	YES
Support handles	on both sides
Flexible shower on the side of the toilet	YES with thermostat
Free space on the sides of the toilet	left Above 90 cm right 21.5 cm frontal Above 90 cm





Electric doorbell/telephone on the side of the toilet	YES
Washbasin with space underneath for wheelchair approach	6.56 cm
Height from the ground lower edge mirror	sufficient for use by a person in a wheelchair
Baby changing table	NO
	
	





Medical practices/healthcare facilities

Hospitals near the property	San Donato Hospital, Via Pietro Nenni, n. 20. Switchboard + 39 0575 2551
Any dialysis facilities	<p>The "Dialysis on holiday" initiative allows chronic kidney patients living in Tuscany, in other regions and even abroad, to find the dialysis service in Tuscan holiday resorts when they are on holiday.</p> <p>Dialysis treatment is continuous and often the citizen in treatment is tied to the place of habitual residence for the sessions that take place during the week. It therefore becomes difficult for the dialysis person to be able to move to places for vacation and other needs, if travel planning is not first made with the network of the various dialysis centers.</p> <p>SAN DONATO AREZZO HOSPITAL Pernici Maria Grazia - Hemodialysis Nursing Coordinator Arezzo. Tel.+390575255516 mariagrazia.pernici@uslsudest.toscana.it</p>



Project promoted by



Regione Toscana

Project carried out with the contribution of the



**Presidenza del
Consiglio dei Ministri**
Ministro per la disabilità